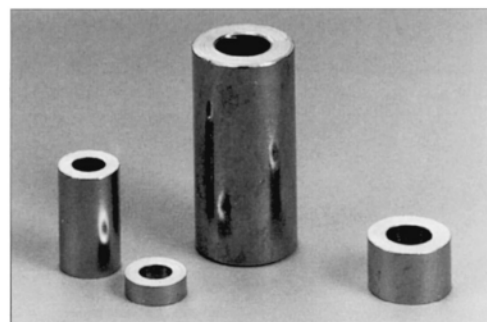
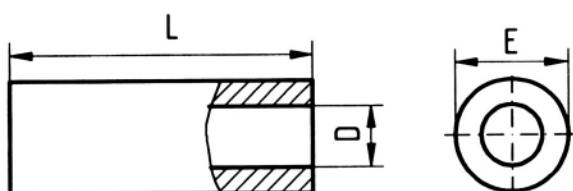


## Dist®



Bezeichnung	Référence	Designazione	L = Längen (Toleranz js13)	L = Longueurs (Tolérance js13)	L = Lunghezze (tolleranze js13)
		Ø D    Ø E			

### CuZn40Pb3 Messing vernickelt

### CuZn40Pb3 Laiton nickelé

### CuZn40Pb3 Ottone nichelato

0100/ <b>Dist 2240M-</b>	2,2	4	1	2	3	4	5	6	8	10	12	15	20												
0100/ <b>Dist 2550M-</b>	2,5	5	1	2	3	4	5	6	8	10	12	15	18	20											
0100/ <b>Dist 3260M-</b>	3,2	6	1	2	3	4	5	6	7	8	9	10	12	15	18	20	25	30	35	40	50	60			
0100/ <b>Dist 4380M-</b>	4,3	8	1	2	3	4	5	6	7	8	9	10	12	13	14	15	16	18	20	25	30	35	40	50	60
0100/ <b>Dist 53100M-</b>	5,3	10		2	3		5		7	8		10	12	14	15	18	20	25	30	32	35	40	45		

Bestellbeispiel:  
 Exemple de commande:  
 Esempio di ordinazione:

0100/**Dist 4380M-20**  
 int. Ø 4,3, ext. Ø 8, L = 20 mm